

RESIDENCE

PH2

LOWER LEVEL

2 BEDROOMS / 2 BATHROOMS

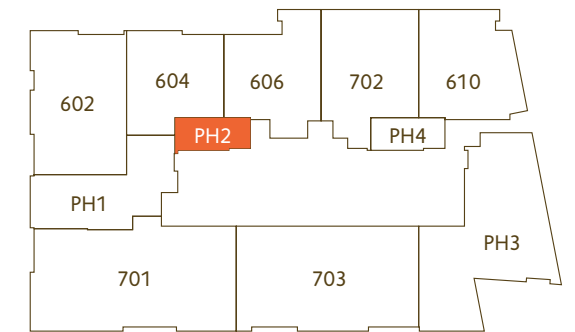
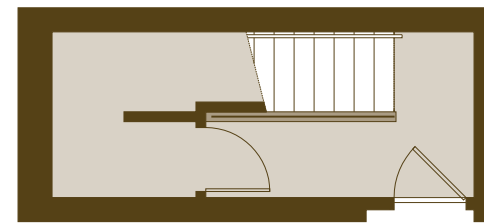
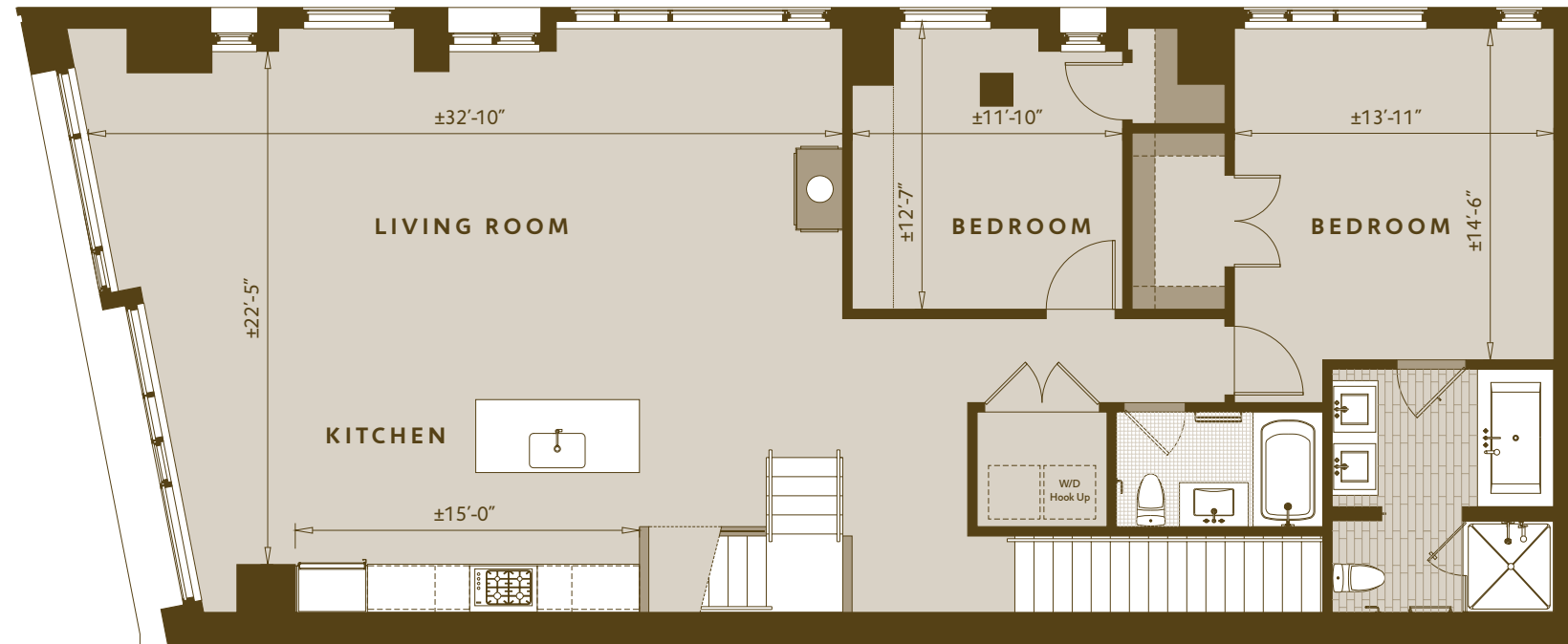
1803 SF. +/-

834 SF. +/- TERRACE

price:

condo fee:

notes:



NORTH



[SCALE: 1/8"=1'-0"]

FP3.

FORT POINT LIVING

SALES CENTER

368 Congress Street Boston, Massachusetts 02110

T 617.350.7410 F 617.350.7411

www.fp3boston.com

Because of continuing changes in products, building codes and availability of materials, builder reserves the right to incorporate new and improved design features at any time without notice or to use equivalent materials. All dimensions shown in this floor plan are approximate and plans and specifications are subject to modifications and improvements at any time without notice.

RESIDENCE

PH2

TERRACE LEVEL

2 BEDROOMS / 2 BATHROOMS

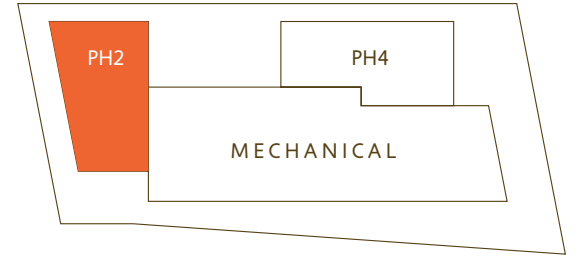
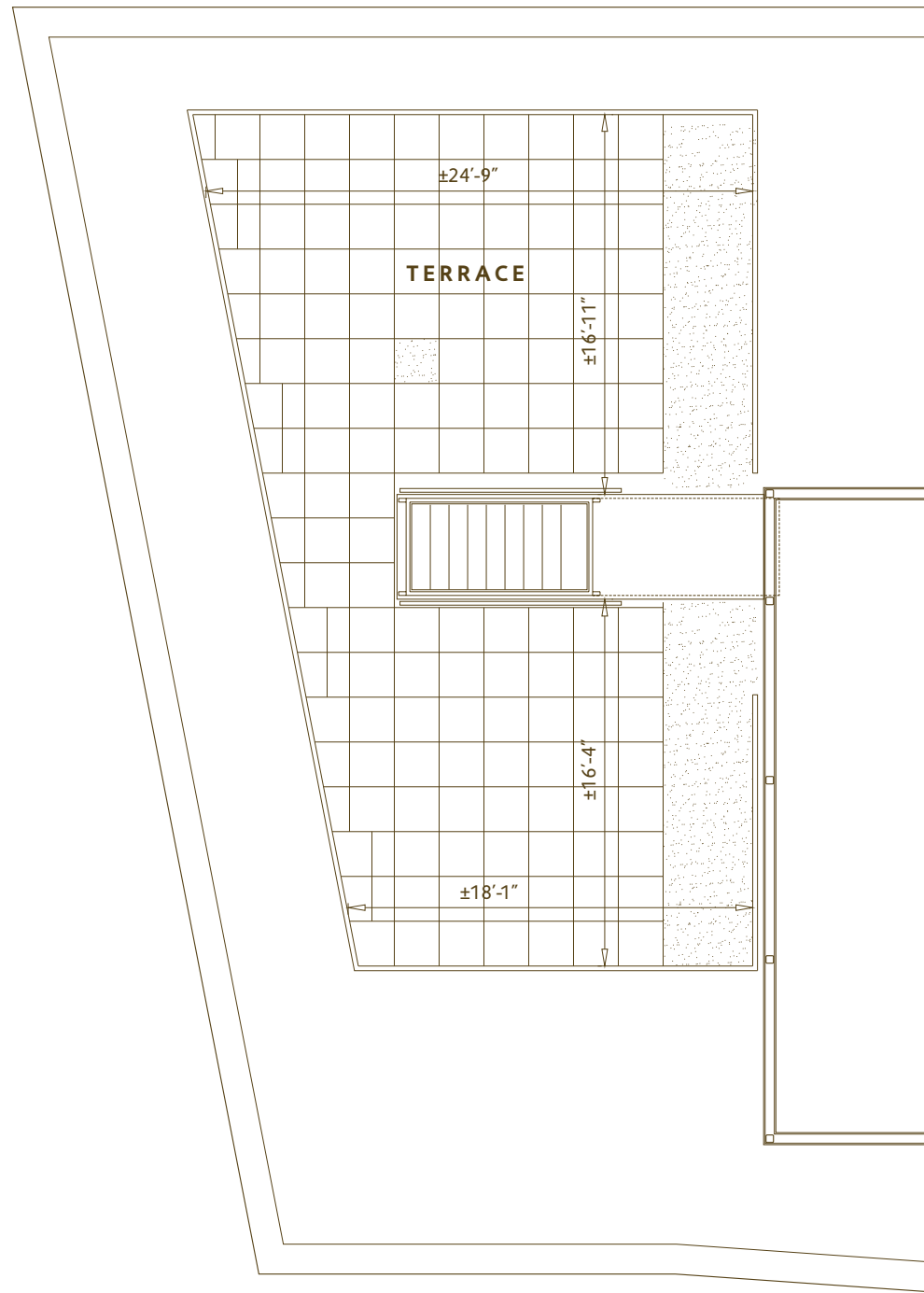
1803 SF. +/-

834 SF. +/- TERRACE

price:

condo fee:

notes:



[SCALE: 1/8" = 1'-0"]

FP3.

FORT POINT LIVING

SALES CENTER

368 Congress Street Boston, Massachusetts 02110

T 617.350.7410 F 617.350.7411

www.fp3boston.com

Because of continuing changes in products, building codes and availability of materials, builder reserves the right to incorporate new and improved design features at any time without notice or to use equivalent materials. All dimensions shown in this floor plan are approximate and plans and specifications are subject to modifications and improvements at any time without notice.